

PRODUCT- REAR TAILGATE LED LIGHT

VEHICLE- 300 SERIES LANDCRUISER 2021+ (WILL NOT FIT MODELS FITTED WITH AUTO TAILGATE)

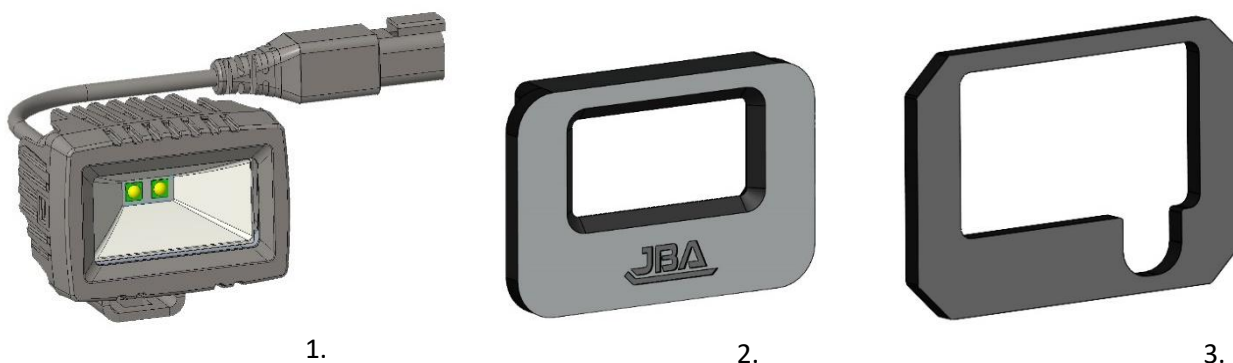
PART NUMBER- JBA-LB803

ESTIMATED FIT TIME

- FITMENT OF LED LIGHT 45-60 MINS
- ELECTRICAL WIRING AND FITMENT OF SWITCHES 60-120MINS

IMPORTANT NOTES

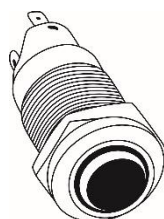
- READ INSTRUCTIONS CAREFULLY PRIOR TO FITMENT
- SET ALL REMOVED PARTS ASIDE ON A SOFT CLEAN SURFACE FOR RE-INSTALLATION
- ENSURE THAT ALL TRIM CLIPS ARE REMOVED FROM THE VEHICLE WHEN PULLING PANELS OUT AND RE-INSERTED BACK INTO THE PANELS BEFORE RE-INSTALLATION (SEE STEPS 1.9-1.10)



KIT CONTENTS

ITEM	DESCRIPTION	PART NO.	QTY
1	JBA 300 SERIES REAR TAILGATE LIGHT	10-LB803LW	1
2	JBA 300 SERIES REAR TAILGATE LIGHT FASCIA	10-LB803A	1
3	JBA 300 SERIES REAR TAILGATE LIGHT	10-LB803B	1

OPTIONAL KIT PARTS- JBA TWIN SWITCH



ITEM	DESCRIPTION	PART NO.	QTY
1	JBA TWIN SWITCH	10-LB801S	1

1. PREPARING THE VEHICLE



STEP 1.1 REMOVE 2 X REAR HANDLE INSERTS PULLING DOWN FROM THE TOP CENTRE AND LEVERING FORWARD.



STEP 1.2 USING A PLASTIC TRIM TOOL, LEVER THE CENTRE LATCH COVER AND REMOVE.



STEP 1.3 PULL THE REAR TRIM DOWN FROM THE REAR HANDLE INSERT SECTION (STEP 1.1) TO ENABLE A GRIP ON THE TRIM FOR NEXT STEP.



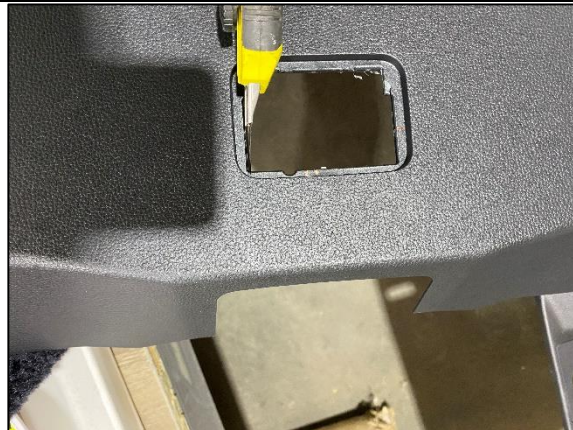
STEP 1.4 START FROM THE CORNER AND BEGIN PULLING DOWN POPPING THE TRIM CLIPS. THESE WILL BE FIRM BUT WILL POP. WORK YOUR WAY ACROSS THE REAR.



STEP 1.5 SEPARATE THE MID SECTION FROM THE REAR SECTION AS SHOWN TO ENABLE ACCESS TO THE REMAINDER OF THE TRIM CLIPS IN THE REAR SECTION.



STEP 1.6 REMOVE THE REAR SECTION AND PLACE ON A SOFT CLEAN SURFACE. MARK THE INFILL SECTION AS SHOWN.



STEP 1.7 TRIM THE MARKED OUT SECTIONS WITH A STANLEY KNIFE AS SHOWN. TAKE CARE NOT TO SCRATCH THE TOP SURFACE WHILE CUTTING.



STEP 1.8 ONLY COMPLETE THIS STEP IF FITTING OPTIONAL SWITCH TO FASCIA. TRIM BOTTOM LEFT SECTION APPROX 30MM AS SHOWN ON THE REAR OF THE PANEL SIDE.

REFERENCE STEPS FOR TRIM CLIPS

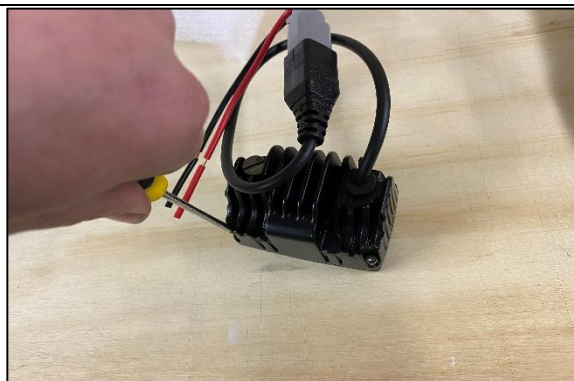


STEP 1.9 REFERENCE PICS FOR TRIM CLIPS (EXAMPLE ONLY). AS YOU ARE REMOVING PANELS, KEEP NOTICE OF ANY CLIPS THAT HAVE REMAINED IN THE VEHICLE AND REMOVE WITH TRIM CLIP REMOVER.



STEP 1.10 RE-INSERT CLIPS INTO THE PLASTIC TRIM PANEL LOCATION. THEY WILL NORMALLY SLIDE IN AND POP INTO POSITION. THIS STEP WILL ENSURE AN EASIER RE-INSTALLATION OF THE PANELS LATER.

2. INSTALLING THE LIGHT



STEP 2.1 REMOVE 4 X 2.5MM ALLEN KEY SCREWS FROM THE REAR OF THE LIGHT.



STEP 2.2 SEPARATE THE FRONT FASCIA AND DISCARD (KEEP THE SCREWS).



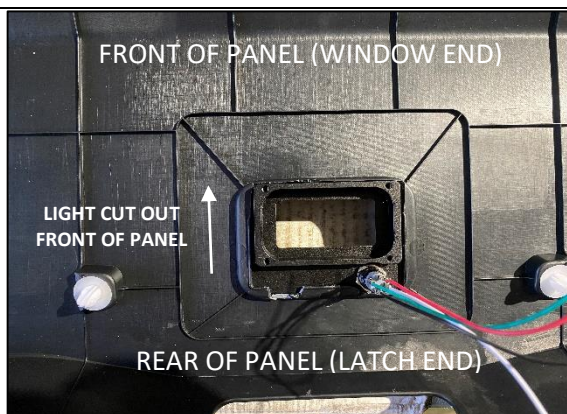
STEP 2.3 OPTIONAL STEP- ONLY COMPLETE IF FITTING JBA SWITCH TO FASCIA. PLACE THE JBA FASCIA ON A SOFT SURFACE SUCH AS SOME CLEAN CARDBOARD. USING A 12MM DRILL, BEGIN DRILLING SLOWLY UNTIL A SMALL HOLE BEGINS ON THE FRONT SIDE.



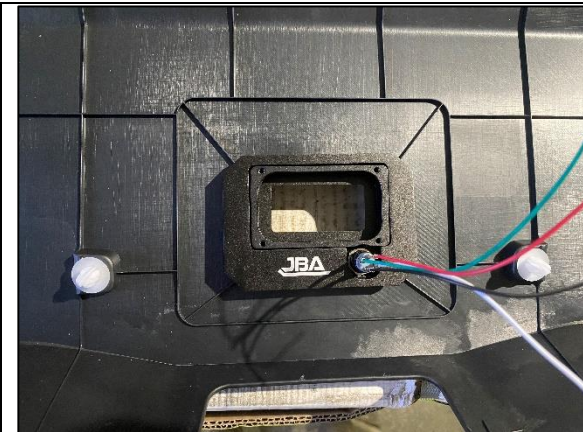
STEP 2.4 OPTIONAL STEP- ONLY COMPLETE IF FITTING JBA SWITCH TO FASCIA. TURN THE FASCIA OVER AND COMPLETE DRILLING HOLE ALL THE WAY THROUGH. TAKE YOUR TIME, DRILL SLOWLY AND STOP FREQUENTLY TO ENSURE PART DOESN'T SPIN WHILE DRILLING.



STEP 2.5 OPTIONAL STEP- ONLY COMPLETE IF FITTING JBA SWITCH TO FASCIA. INSERT SWITCH IN TO FASCIA AND TIGHTEN NUT FROM REAR USING 14MM SPANNER.



STEP 2.6 PRESS THE JBA FASCIA INTO THE REAR TAILGATE SECTION AS SHOWN. THIS WILL BE FIRM AS IT IS A SNUG FIT. ENSURE THE CUT OUT FOR THE LIGHT IS FACING TOWARDS THE FRONT AS SHOWN.



STEP 2.7 PLACE REAR MOUNTING PLATE OVER FACIA AS SHOWN.



STEP 2.8 RE INSTALL LED LIGHT USING 4 X 2.5MM SCREWS REMOVED IN STEP 2.1. ENSURE LIGHT IS SITTING FLAT AND TIGHT AND POWER CABLE IS FACING TOWARDS THE FRONT OF THE PANEL.

3. WIRING THE LIGHT

A NEW POWER WIRE WILL BE REQUIRED TO BE RUN FROM THE VEHICLE INTO THE TAILGATE AS THERE IS NO WIRING IN THE TAILGATE THAT CAN BE USED TO POWER THE 2A LED. MIN 3MM WIRE IS RECOMMENDED.



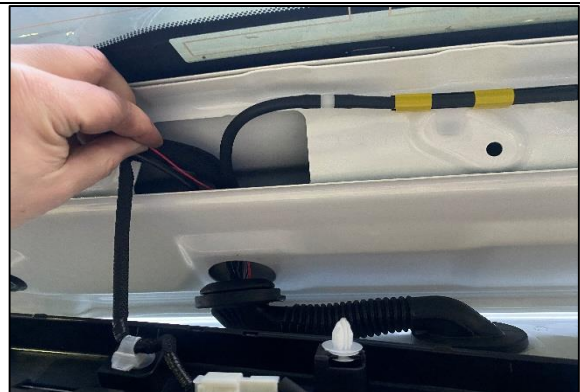
STEP 3.1 REMOVE THE REMAINING TAILGATE SECTIONS (FROM STEPS 1.1-1.5) ON BOTH SIDES AND ALONG THE TOP. WHEN REMOVING THE SIDE SECTIONS ON THE TAILGATE, CHECK FOR BODY CLIPS REMAINING IN THE VEHICLE.



STEP 3.2 IT CAN BE EASIEST TO RUN THE POWER FROM THE REAR JACK PANEL AREA. FROM THERE, PULL BACK THE REAR DOOR GASKET AND TRIM PANELS BACK ENOUGH TO RUN POWER WIRE UP THE SIDE OF THE VEHICLE AS SHOWN.



STEP 3.3 GENTLY PULL DOWN THE ROOF LINING AND RUN ALONG TO DOOR GROMMET.

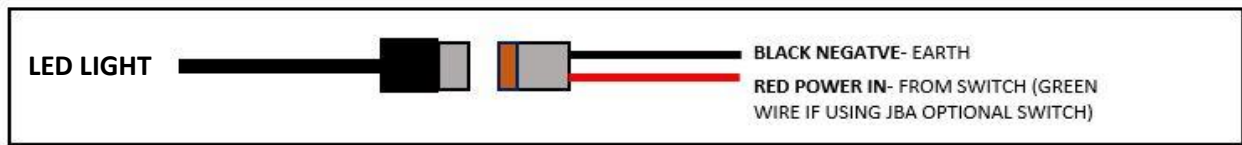


STEP 3.4 FEED THE WIRE THROUGH THE GROMMET AND INTO THE TAILGATE SECTION AS SHOWN.

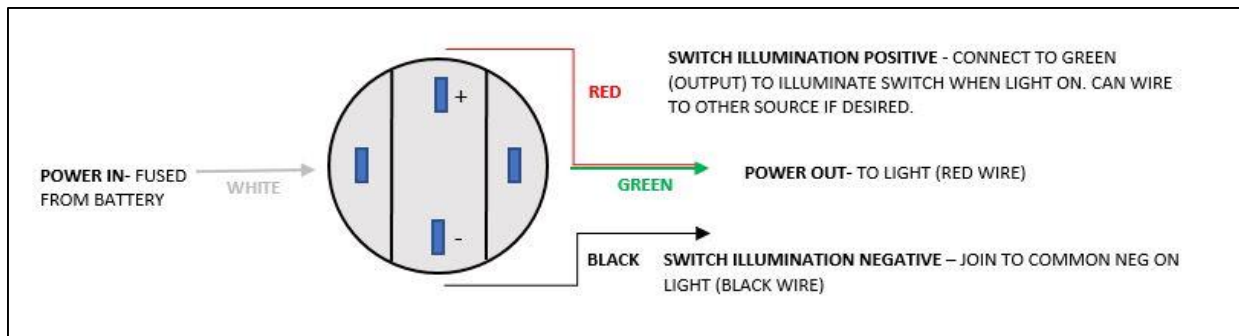


STEP 3.5 RUN POWER WIRE ALONG BODY LOOM TO REAR LATCH SECTION AND SOLDER TAIL OF LED LIGHT AS SHOWN.

LED LIGHT WIRING DIAGRAM- ENSURE A 5A RATED FUSE IS USED



WIRING OPTIONAL JBA PUSH BUTTON SWITCH



4. FINAL STEPS



STEP 4.1 RE-INSTALL REAR TAILGATE PANELS AND PLUG LED LIGHT INTO WIRING INSTALLED IN STEPS 3.1 TO 3.5 ABOVE.



STEP 4.2 TEST LED LIGHT AND WIPE DOWN PANELS.