

PRODUCT- TJM SINGLE COMPRESSOR MOUNTING BRACKET

VEHICLE- FORD TRA NEXT GEN RANGER 2022+

PART NUMBER- JBA-CB252, JBA-CB252KIT2A/2B, KIT24A

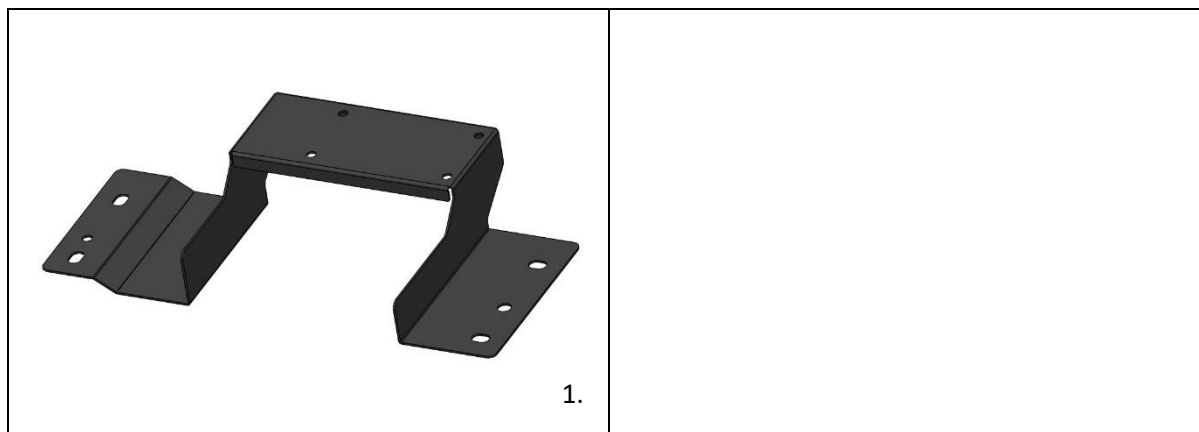
ESTIMATED FIT TIME

- | | |
|--|------------|
| - REMOVAL AND REFITMENT OF REAR BUMPER AND GUARDS | 60-90 MINS |
| - PREPERATION AND MOUNTING OF COMPRESSOR AND BRACKET | 60 MINS |
| - ELECTRICAL WIRING AND PLUMBING OF AIR OUTLETS | 90-120MINS |

IMPORTANT NOTES

- READ INSTRUCTIONS CAREFULLY PRIOR TO FITMENT
- ENSURE 567 THREAD SEALANT IS APPLIED TO ALL AIR THREADS INSTALLED
- REFER TO TJM COMPRESSOR INSTALLATION INSTRUCTIONS FOR WIRING SPECIFICATIONS
- NITTO FITTING USED WITH KITS ARE SUPPLIED SEPERATLEY (NOT BY JBA) AVAILABLE THROUGH TJM STORES (P/N 013COMPPF01)

KIT CONTENTS

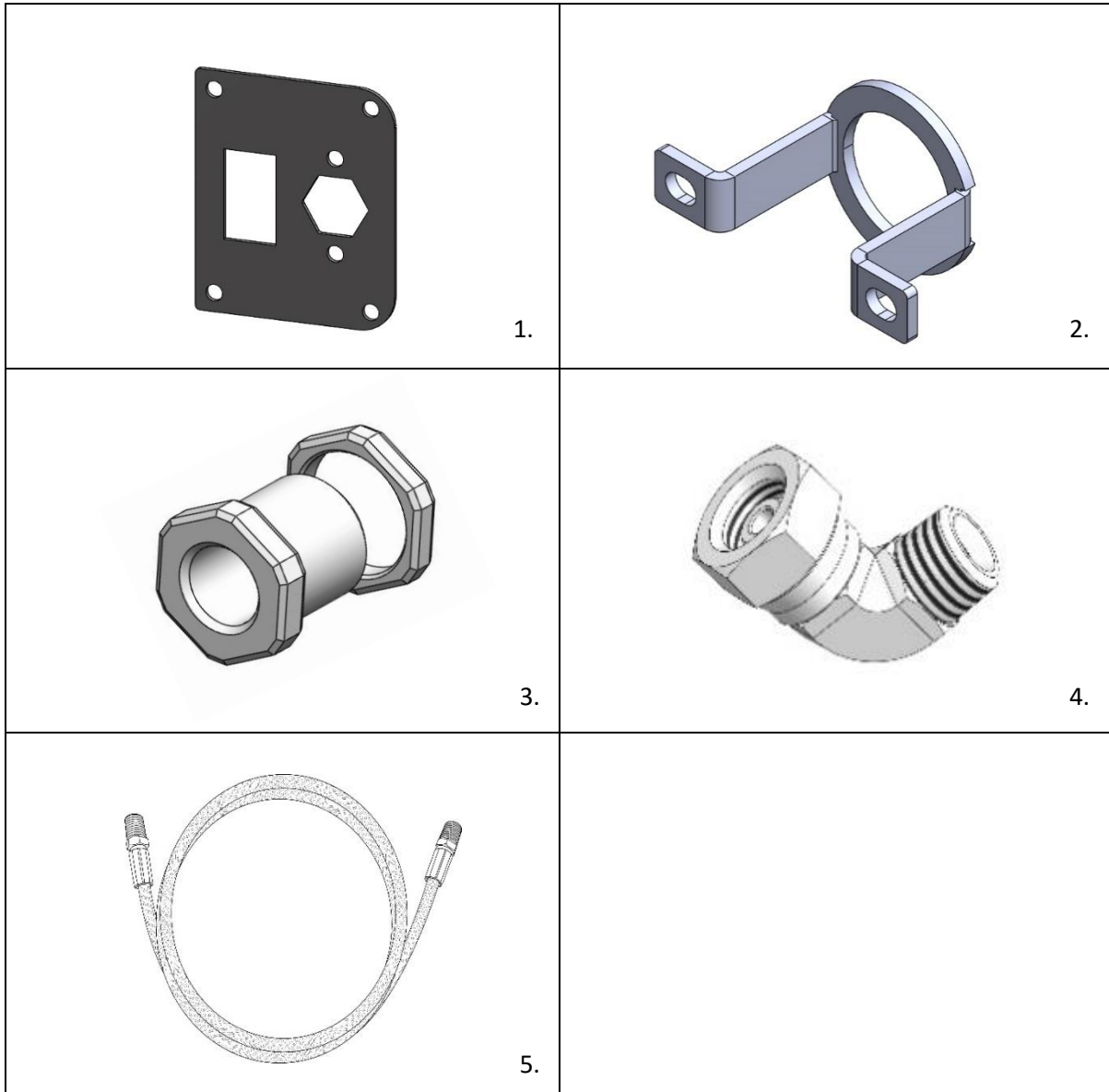


ITEM	DESCRIPTION	PART NO.	QTY
1	JBA TRA NEXT GEN RANGER COMPRESSOR BRACKET	10-CB252A	1
2	M6 HEX SERR FLANGE NUT ZY	N24 06ZY	1
3	M6 x 20MM CSK PHIL DRIVE GR 304 S/S	X37 0616CP301	1
4	M6 X 18 FLAT WASHER GR 304 S/S	X79 082018G304	1
5	M8 X 16MM BUTTON HD SOCKET SCR GR 304 S/S	X72 08016304	4
6	5/16 X 3/4 X 18G FLAT WASHER GR 304 S/S	X79 082018G304	8
7	M8 NYLON INSERT LOCK NUT GR 304S/S	X53 8304	4
8	JBA ANTI-VIBRATION TAPE	JBA-TP1	1
7	M10 X 25 X 1.5 BOLT SEMS ASSEMBLY*	JNS-79	4

*** M10 X 25 SEMS ONLY INCLUDED IN RAPTOR KITS**

OPTIONAL KIT PARTS- JBA-CB252KIT-2A

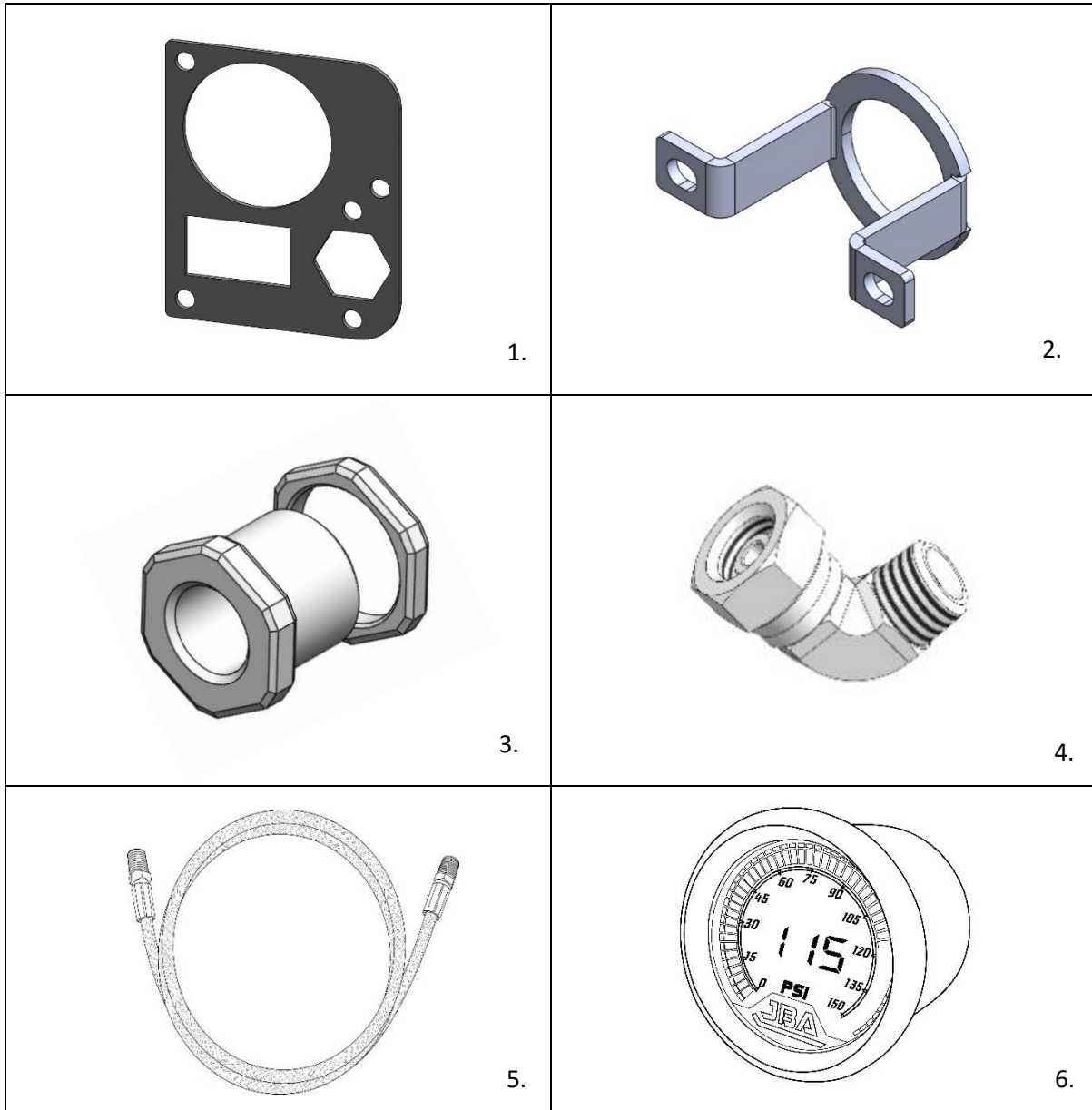
REAR 12V PANEL FASCIA OUTLET PANEL WITH AIR/SWITCH OUTLET



ITEM	DESCRIPTION	PART NO.	QTY
1	JBA NEXT GEN RANGER FACSIA PLATE 1 AIR/SWITCH	10-CB252FP1	1
2	JBA BULK HEAD RECESSED HOUSING BRACKET	JBA-CB101B	1
3	JBA STAINLESS BULK HEAD	JBA-CB103	1
4	JBA STAINLESS ELBOW 90 DEGREE	JBA-CB106	2
5	JBA STAINLESS HOSE 400MM	JBA-CB111	1
6	M4 X 16 CSK GR 304 S/S	X37 0416CP304	6
7	M4 NYLOC NUT GR 304 S/S	X53 4304	6
8	M4 X 10 WASHER GR 304 S/S	X80 4090.8304	6

OPTIONAL KIT PARTS- JBA-CB252KIT-2B

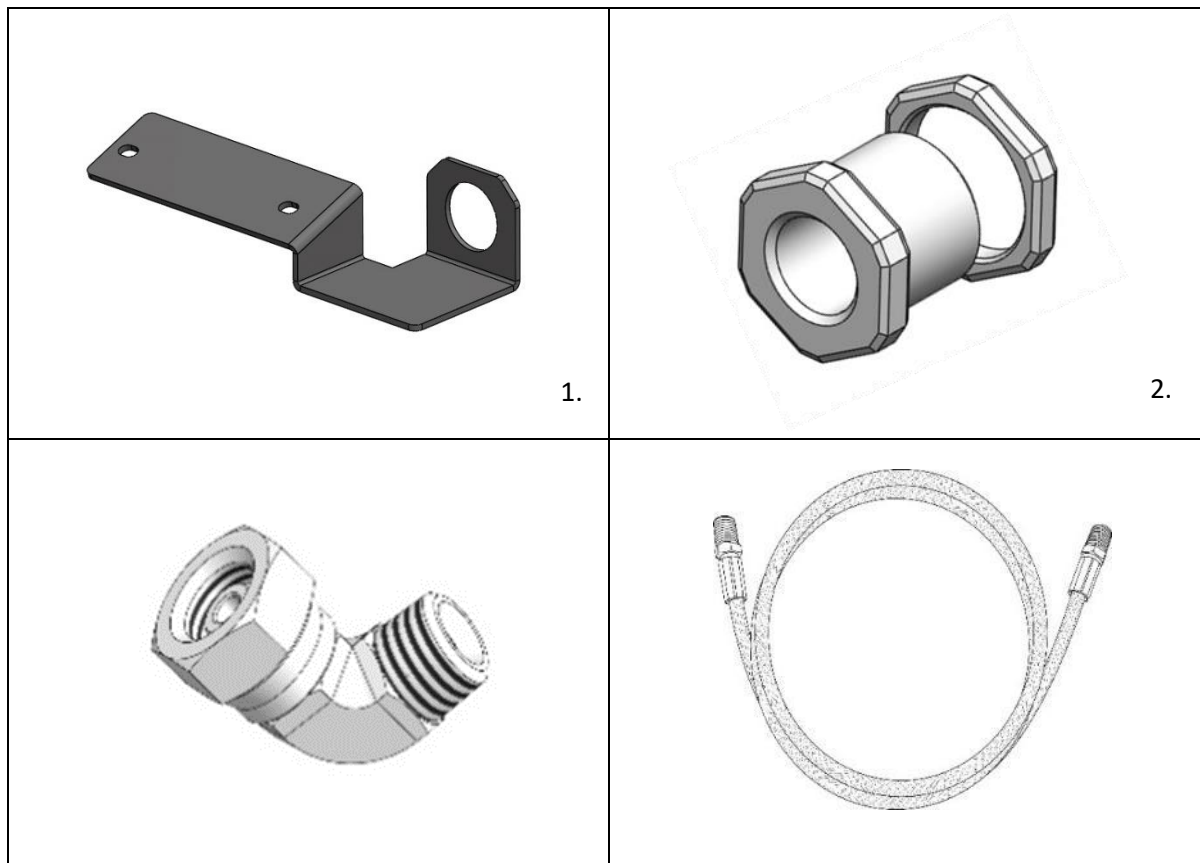
REAR 12V PANEL FASCIA OUTLET PANEL WITH AIR/SWITCH OUTLET



ITEM	DESCRIPTION	PART NO.	QTY
1	JBA NEXT GEN RANGER FACSIA PLATE 1 AIR/SWITCH	10-CB252FP1	1
2	JBA BULK HEAD RECESSED HOUSING BRACKET	JBA-CB101B	1
3	JBA STAINLESS BULK HEAD	JBA-CB103	1
4	JBA STAINLESS ELBOW 90 DEGREE	JBA-CB106	2
5	JBA STAINLESS HOSE 400MM	JBA-CB111	1
6	JBA 12V DIGITAL PSI GAUGE	JBA-CB151	1
7	M4 X 16 CSK GR 304 S/S	X37 0416CP304	5
8	M4 NYLOC NUT GR 304 S/S	X53 4304	5
9	M4 X 10 WASHER GR 304 S/S	X80 4090.8304	5

OPTIONAL KIT PARTS- JBA-CB252KIT-4A

JBA NEXT GEN RANGER UNDER TUB WITH TOWBAR AIR OUTLET



ITEM	DESCRIPTION	PART NO.	QTY
1	JBA SINGLE TOW PLUG BRACKET	JBA-TB101	1
2	JBA COMPRESSOR BULK HEAD AND NUT	JBA-CB103	1
3	JBA STAINLESS ELBOW 90 DEGREE	JBA-CB106	2
4	JBA STAINLESS HOSE 1200MM	JBA-CB113	1
5	JBA TOWBAR COMPRESSOR CAP	JBA-TB113C	1
6	M4 X 25MM PAN HD PHIL M/T GR 304 S/S	X37 0425PP304	2
7	M4 NYLOC NUT GR 304 S/S	X53 4304	2
8	M4 X 10 WASHER GR 304 S/S	X80 4090.8304	2

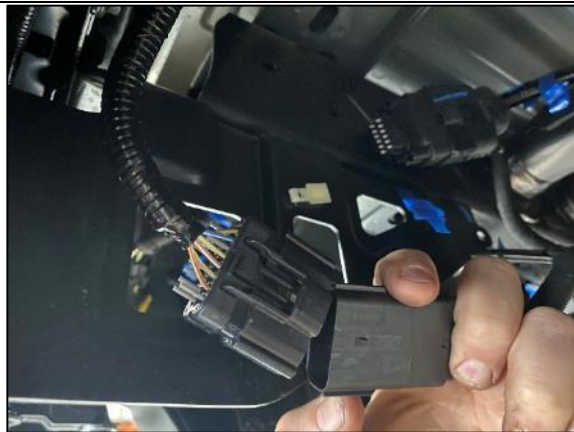
1. PREPARING THE VEHICLE



STEP 1.1 IF NO TOWBAR FITTED REMOVE REAR BUMPER BY REMOVING 3 X BOLTS SHOWN EACH SIDE.



STEP 1.2 IF FACTORY TOWBAR FITTED REMOVE REAR BUMPER BY REMOVING 3 X BOLTS SHOWN EACH SIDE.



STEP 1.3 DISCONNECT WIRING HARNESS ON PASSENGER SIDE AS SHOWN.



STEP 1.4 PULL THE REAR BUMPER OFF AND SET ASIDE IN A CLEAN/SOFT SURFACE.



STEP 1.5 REMOVE PLASTIC STEP BY REMOVING 4 X M6 SCREWS FROM UNDERSIDE. SET ASIDE FOR REFITMENT LATER.



STEP 1.6 REMOVE MUDFLAP, START BY REMOVING M6 SCREW FROM UNDERNEATH AS SHOWN.



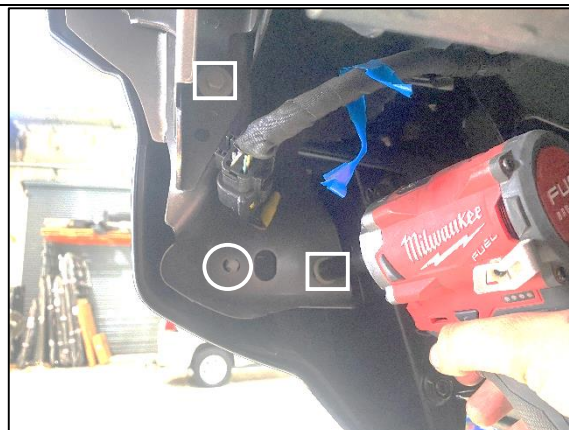
STEP 1.7 REMOVE 6 X PLASTIC CLIPS (CIRCLES) AND 1 X TORQ SCREW (SQUARE) AS SHOWN. TO REMOVE PLASTIC CLIPS, UNSCREW WITHOUT PUSHING ON THE SCREW GENTLY.



STEP 1.8 PULL BACK THE LOWER 20-30CM OF THE FLARE. YOU WILL NEED TO SQUEEZE AND PUSH THE WHITE CLIP FROM BEHIND WHILE PULLING FROM THE FRONT.



STEP 1.9 IN BEHIND THE FLARE, REMOVE TORQ SCREW AS SHOWN.



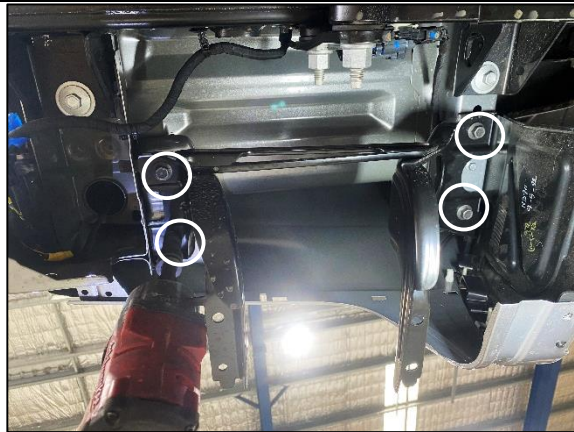
STEP 1.10 REMOVE 2 x M6 SCREWS (IN SQUARE). ONCE SCREW REMOVED, PUSH THROUGH THE WHITE PLASTIC CLIP NEXT TO IT (IN CIRCLE).



STEP 1.11 REMOVE QUARTER PANEL FROM VEHICLE WORKING ALONG PUSHING THROUGH THE PLASTIC CLIPS. **TIP-** AN 8MM SOCKET CAN BE USED TO SQUEEZE THE CLIP.



STEP 1.12 FULLY REMOVE REAR PANEL AS SHOWN AND SET ASIDE.



STEP 1.13 REMOVE 4 X M10 BOLTS STEP FRAME. NOTE- THESE HAVE LOCTITE APPLIED FROM FACTORY AND TAKE SOME CONVINCING.



STEP 1.14 REMOVE 2 X M6 SCREWS ON OUTSIDE OF BODY.



STEP 1.15 PULL BACK INNER GUARD AS SHOWN TO GIVE CLEARANCE/ACCESS FOR NEXT STEP.



STEP 1.16 REMOVE STEP BRACKET. YOU WILL NEED TO SLIDE THE FRONT OF THE BRACKET FORWARD TO GET THE PIN OUT AS SHOWN.



STEP 1.17 ONCE REMOVED, BEND TAB WITH THE PIN UP SLIGHTLY AS SHOWN.

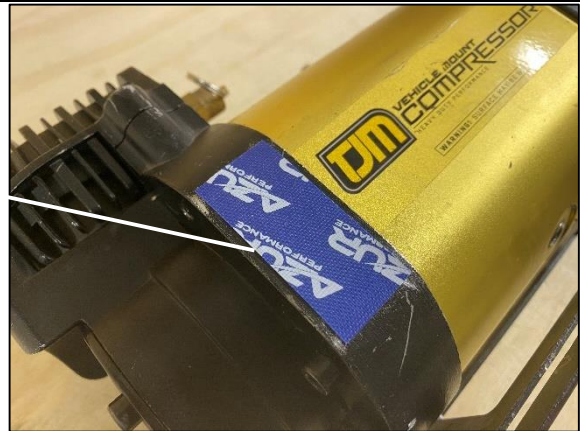


STEP 1.18 REMOVE M6 SCREW AND KEEP ASIDE FOR BRACKET INSTALLATION.

2. PREPARE THE COMPRESSOR



STEP 2.1 MOUNT COMPRESSOR TO BRACKET IN THE ORIENTATION SHOWN USING M8 X 16 DOME HEADS WITH WASHER UNDER THE HEAD FROM UNDERNEATH THE BRACKET AND M8 NYLOC NUT WITH WASHER FROM COMPRESSOR SIDE.



STEP 2.2 APPLY ANTO VIBRATION TAPE TO THE MOTOR END ON THE INSIDE FACE AS SHOWN.



STEP 2.3 FIT JBA-CB106 90 DEGREE ELBOW TO BOTTOM RIGHT 1/4" GRUB SCREW AND FACE 45 DEGREES TO THE LEFT AS SHOWN. INSTALL TJM PRESSURE SWITCH ON THE BOTTOM LEFT 1/8" SCREW. CONNECT RELEVANT HOSE FROM KIT BEING USED- 400MM FOR KIT 2 AND 1200MM FOR KIT 4.

3. OPTIONAL STEPS- INSTALLING SWITCH AND AIR OUTLETS FOR COMPRESSOR KITS

REFER TO KIT NUMBER YOU ARE INSTALLING AND USE RELEVANT STEPS REQUIRED

3.1 JBA KIT2A AND 2B INSTALLING SWITCH AND OUTLETS TO 12V PANEL IN TUB



STEP 3.1.1 REMOVE 12V PANEL FROM VEHICLE AND PLACE ON WORK BENCH. PLACE FASCIA PLATE IN RHS GAP AND MARK OUTER SCREW HOLES AS SHOWN.



STEP 3.1.2 MARK OUT CUTTING TEMPLATE AROUND SCREW LOCATIONS MARKED IN PREVIOUS STEP.



STEP 3.1.3 FLIP PANEL OVER AND CUT OUT SECTION AS SHOWN.



STEP 3.1.4 FIT JBA-CB101B HOUSING TO FASCIA PLATE USING M4 X 16 CSK SCREWS. ASSEMBLE JBA-CB103 BULKHEAD WITH NITTO AS SHOWN ENSURING FLAT FACES ARE IN LINE. INSTALL ASSEMBLY INTO FASCIA AND FASTEN NUT FROM BEHIND- ENSURE LOCTITE APPLIED TO NUT



STEP 3.1.5 FIT JBA-CB106 90 DEGREE ELBOW AS SHOWN FACING SLIGHTLY DOWN ON A 45 DEGREE ANGLE.



STEP 3.1.6 AFTER STEPS 4 ARE COMPLETED BELOW, CONNECT STAINLESS HOSE AND REFIT PANEL TO VEHICLE TUB.

3.2 JBA KIT4A INSTALLING OUTLET TO REAR TOWBAR BRACKET



STEP 3.2.1 INSTALL JBA-CB103 BULKHEAD AND NUT TO TOWBAR BRACKET. ENSURE LOCTITE IS APPLIED TO REAR NUT.



STEP 3.2.2 INSTALL JBA-CB106 90 DEGREE ELBOW FACING ON A 45 DEGREE ANGLE AS SHOWN.



STEP 3.2.3 INSTALL BRACKET TO FORD 12PIN PLUG BRACKET. RUN 1200MM HOSE ABOVE PLATE AND CABLE TIE NEATLY ALONG AND FEED UP TO COMPRESSOR.

4. INSTALLING THE BRACKET AND COMPRESSOR INTO THE VEHICLE

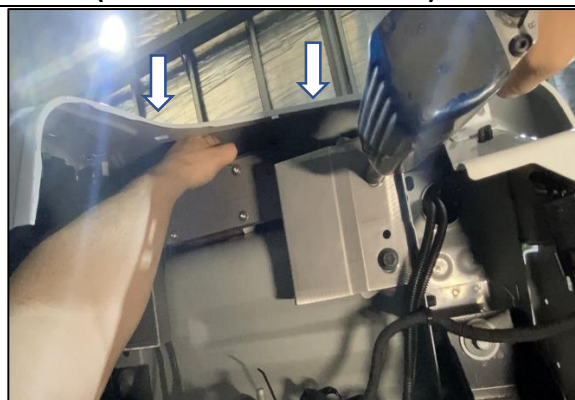
NOTE- FOR FORD RAPTOR, INSTALL THE BRACKET USING M10 X 30 SEMS BOLTS PROVIDED AND ENSURE THERE IS AN EVEN GAP BOTH SIDES OF THE COMPRESSOR AS THE BODY IS WIDER.



STEP 4.1 LIFT COMPRESSOR AND BRACKET INTO PLACE AND INSTALL 4 X M10 BOLTS AND 1 X M6 BOLTS REMOVED IN STEP 1.13 AND 1.16 ABOVE (**DON'T TIGHTEN FULLY YET**)



STEP 4.2 INSTALL M6 X 16 CSK SCREW IN THE HOLE AT THE REAR OF THE VEHICLE WITH WASHER AND WHIZZ NUT FROM ABOVE (**NOT FULLY TIGHTENED**)



STEP 4.3 PUSH THE BRACKET SO THE COMPRESSOR IS HARD UP AGAINST THE INNER TUB BODY AND TIGHTEN ALL SCREWS.



STEP 4.4 FROM INSIDE THE TUB, SHAKE THE COMPRESSOR AND CHECK THAT THERE IS NO MOVEMENT BETWEEN THE COMPRESSOR AND TUB BODY. IF THERE IS ANY MOVEMENT, LOOSEN BRACKET AND RE-ADJUST. **THIS STEP IS CRITICAL AND WILL ENSURE THAT THE COMPRESSOR WILL NOT BOUNCE WHILE DRIVING AND CAUSE DAMAGE TO THE OUTER BODY PANEL.**



STEP 4.5 CHECK FOR CLEARANCE BETWEEN THE COMPRESSOR AND OUTER BODY. RUN A STEEL RULER BETWEEN TO ENSURE 2-3MM GAP.



STEP 4.6 ENSURE THAT THE M6 SCREWS EITHER END ARE FULLY TIGHTENED AND REMOVE THE 4 X M10 BOLTS.



STEP 4.7 ENSURE THE PLASTIC GUARD IS STILL PULLED BACK OUT OF THE WAY FROM STEP 1.15 TO MAKE THIS STEP EASIER. RE-INSTALL THE REAR STEP AS SHOWN. IT IS EASIER TO FIT THE REAR (RIGHT) TAB FIRST THEN PUSH THE PIN IN FROM THE FRONT (LEFT) END IN THIS SEQUENCE.



STEP 4.8 RE-ASSEMBLE THE REAR BUMPER AND CONNECT ALL OUTLETS FROM STEPS 3 (IF APPLICABLE AND CONFIGURATION). CYCLE THE COMPRESSOR AND CHECK FOR ANY AIR LEAKS. FINALISE ALL STEPS FOR THE RELEVANT AIR/SWITCH OUTLETS, CABLE TIE ANY LOOMS/HOSES NEATLY AND WIPE DOWN FOR COMPLETION.