

PRODUCT- TJM TWIN COMPRESSOR MOUNTING BRACKET

VEHICLE- Y62 PATROL 2013+

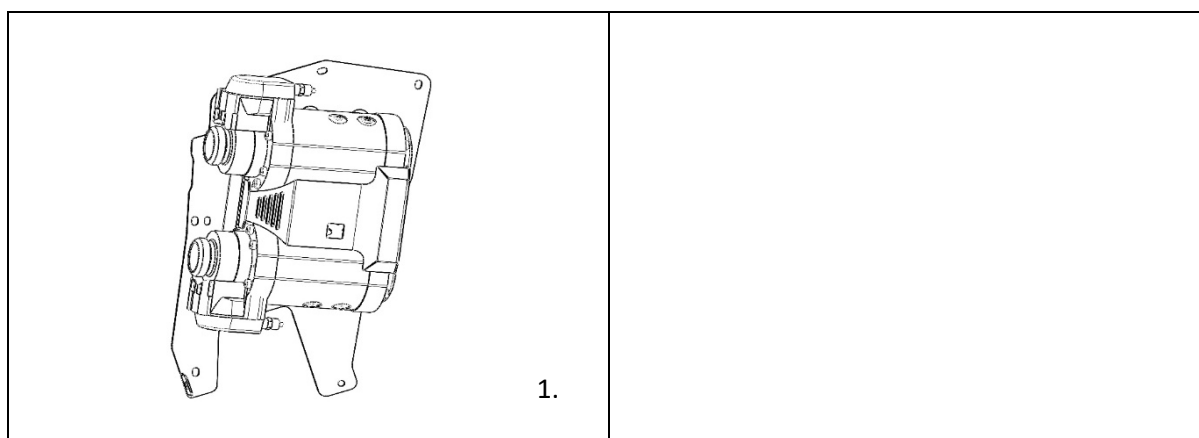
PART NUMBER- JBA-CB215, JBA-CB215KIT2, KIT3

ESTIMATED FIT TIME

- | | |
|--|--------------|
| - REMOVAL AND REFIT OF SEAT AND INTERIOR PANELS | 60 MINS |
| - REMOVAL AND REFIT OF DRAWER SYSTEM (IF REQUIRED) | 60-90 MINS |
| - PREPARING AND MOUNTING COMPRESSOR | 60 MINS |
| - WIRING COMPRESSOR AND MOUNTING SWITCH | 120-180 MINS |

IMPORTANT NOTES

- READ INSTRUCTIONS CAREFULLY PRIOR TO FITMENT
- ENSURE 567 THREAD SEALANT IS APPLIED TO ALL AIR THREADS INSTALLED
- ENSURE THAT ALL TRIM CLIPS ARE REMOVED FROM THE VEHICLE WHEN REMOVING PANELS AND RE-INSERTED BACK INTO THE PANELS BEFORE RE-INSTALLATION (SEE STEPS 1.18-1.20)
- REFER TO TJM COMPRESSOR INSTALLATION INSTRUCTIONS FOR WIRING SPECIFICATIONS
- NITTO FITTING USED WITH KITS 2 AND 3 SUPPLIED WITH TJM AIRLINE KIT (013COMPKN) SUPPLIED SEPERATLEY (NOT BY JBA) AVAILABLE THROUGH TJM STORES

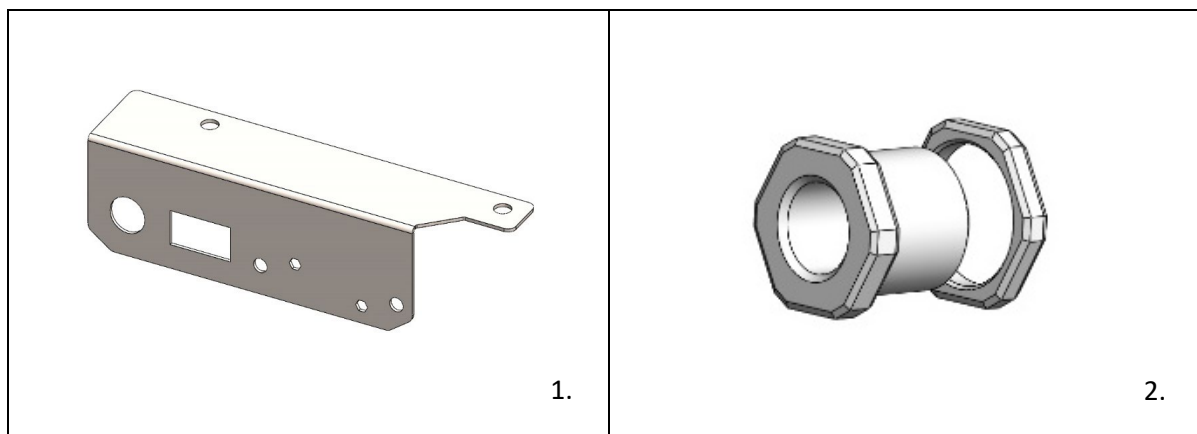


KIT CONTENTS

ITEM	DESCRIPTION	PART NO.	QTY
1	Y62 SERIES TWIN COMPRESSOR BRACKET	10-CB215A	1
2	M6 x 20MM SEMS ASSMEMBLY Z/Y	B48 0620ZY	5
3	M6 HEX SERR FLANGE NUT ZY	N24 06ZY	1
4	M8 X 16MM HEX HEAD SET SCREW GR 8.8 316 S/S	X07 80168.8316	6
5	5/16 X 3/4 X 18G FLAT WASHER GR 304 S/S	X79 082018G304	12
6	M8 NYLON INSERT LOCK NUT GR 304S/S	X53 8304	6

OPTIONAL PARTS- KIT CONTENTS

JBA-CB215TASF QUARTER PANEL AIR/SWITCH/FUSE OUTLET BRACKET



ITEM	DESCRIPTION	PART NO.	QTY
1	Y62 TOOL COMARTMENT AIR/SWITCH/FUSE BRACKET	10-CB215TASF	1
2	JBA COMPRESSOR BULK HEAD AND NUT	JBA-CB103	1
3	14G X 1 CSK PHIL SELF TAPPER GR 304 S/S	X41 1425304	2
4	M4 X 12MM PAN HD PHIL M/T GR 304 S/S	X37 0412PP304	4
5	16MM2 6MM STUD FLARED ENTRY CABLE LUG	57124	4
6	20MM HEAT SHRINK RED 9MM	ACX1277	4

1. PREPARING THE VEHICLE- REMOVING THE SEATS



STEP 1.1 START AT THE REAR PASSENGER SIDE DOOR, FOLD THE PASSENGER SECOND ROW OF SEATS FORWARD AND REMOVE PLASTIC TRIM LEVERING UP FROM BODY CLIPS AS SHOWN.



STEP 1.2 REMOVE THE SECOND ROW SEAT BELT USING 14MM SOCKET.



STEP 1.3 MOVE TO REAR OF THE VEHICLE AND REMOVE REAR STORAGE INSERT.



STEP 1.4 REMOVE 2 X M6 BOLTS USING 10MM SOCKET AND REMOVE REAR INFILL FROM VEHICLE.



STEP 1.5 REMOVE 2 X SCREWS IN SIDE INFILL SECTION USING 10MM SOCKET AND REMOVE. CHECK FOR TRIM CLIPS.



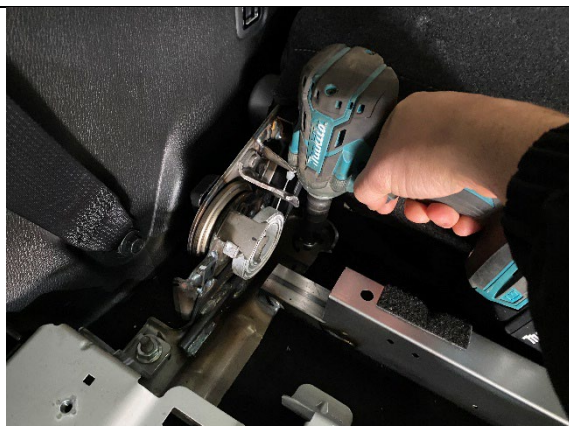
STEP 1.6 STARTING FROM THE LEFT OR RIGHT SIDE, PULL UP THE REAR PLASTIC TRIM AND WORK ACROSS TO FULLY REMOVE. CHECK FOR ANY TRIM CLIPS.



STEP 1.7 REMOVE 2 X TIE DOWN POINTS USING 10MM SOCKET. IT IS EASIER TO POP THE PLASTIC INNER COVER THROUGH THE TIEDOWN AS SHOWN TO ACCESS THE BOLT.



STEP 1.8 STARTING FROM THE LEFT SIDE, START PULLING UP THE CARPETED PANEL AND WORK ACCROSS. CHECK FOR TRIM CLIPS.



STEP 1.9 REMOVE BOLTS FROM PASSENGER SIDE REAR SEAT USING 14MM SOCKET AND PULL SEAT OUT.



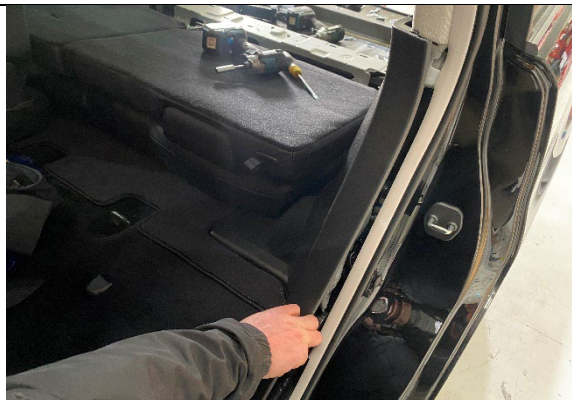
STEP 1.10 REMOVE PASSENGER SIDE REAR SEAT BELT USING 14MM SOCKET.



STEP 1.11 REMOVE 2 X TIE DOWN POINTS USING 10MM SOCKET ON PASSENGER SIDE QUARTER PANEL AS SHOWN.



STEP 1.12 REMOVE REAR TRIM CLIP NEXT TO 12V SOCKET AS SHOWN.



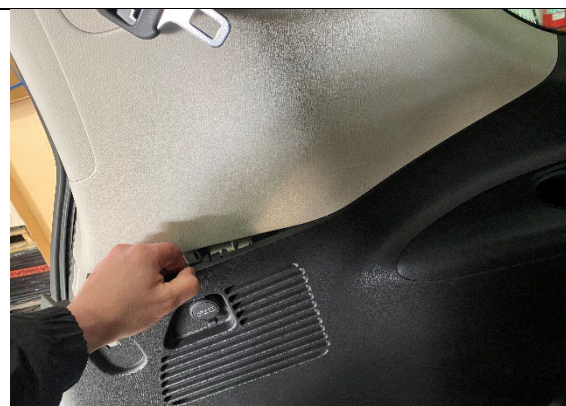
STEP 1.13 MOVE BACK TO PASSENGER SIDE REAR DOOR AND BEGIN PULLING QUARTER PANEL BACK. WORK YOUR WAY FROM BOTTOM TO TOP.



STEP 1.14 MOVE TO THE BACK OF THE VEHICLE AND PULL BACK THE REAR DOOR SEAL.



STEP 1.15 START PULLING QUARTER PANEL BACK AGAIN WORKING FROM BOTTOM TO TOP. THE FIRST 1-2 TRIM CLIPS MAY BE A BIT FIRM BUT THEY WILL POP AND BECOME EASIER



STEP 1.16 START WORKING ALONG THE TOP OF THE PANEL ALONG THE BOTTOM OF THE WINDOW. PUSH ON THE TOP PANEL TO SEPARATE IF REQUIRED.



STEP 1.17 THE QUARTER PANEL SHOULD BE FREE NOW. UNPLUG THE 12V SOCKET FROM THE REAR AND CAREFULLY REMOVE THE QUARTER PANEL FROM THE VEHICLE. CHECK FOR ANY TRIM CLIPS IN THE BODY (REFER TO STEPS 1.18-1.20 BELOW)

REFERENCE PICS FOR TRIM CLIPS



STEP 1.18 REFERENCE PICS FOR TRIM CLIP (EXAMPLE ONLY). AS YOU ARE REMOVING PANELS, KEEP NOTICE OF ANY CLIPS THAT HAVE REMAINED IN THE VEHICLE- NORMALLY WHITE OR GREEN AS SHOWN.



STEP 1.19 USE A TRIM CLIP REMOVER TO POP OUT OF THE VEHICLE AS SHOWN.

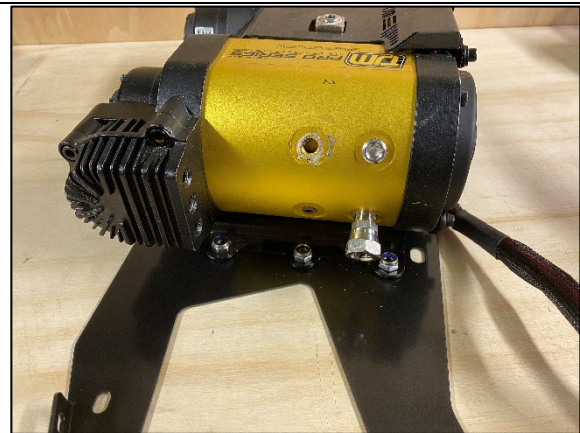


STEP 1.20 RE-INSERT INTO THE PLASTIC TRIM PANEL LOCATION. THEY WILL NORMALLY SLIDE IN AND POP INTO POSITION. THESE STEPS WILL ENSURE AN EASIER RE-INSTALLATION OF THE PANELS LATER.

2. PREPARING COMPRESSOR AND BRACKET



STEP 2.1. MOUNT THE TWIN TJM COMPRESSOR IN THE ORIENTATION SHOWN. USE M8 X 16 SCREW WITH A WASHER UNDER THE HEAD AND M8 NYLOC NUT WITH WASHER FROM BEHIND.



STEP 2.2. FIT JBA-CB104 0 DEGREE ELBOW TO THE 1/4" OUTLET ON THE BOTTOM OF THE TJM COMPRESSOR AS SHOWN. ENSURE ELBOW IS FITTED USING 567 THREAD SEALANT.



STEP 2.3 FIT JBA-CB111 400MM HOSE AS SHOWN.

3. PREPERATION AND INSTALLATION INTO VEHICLE



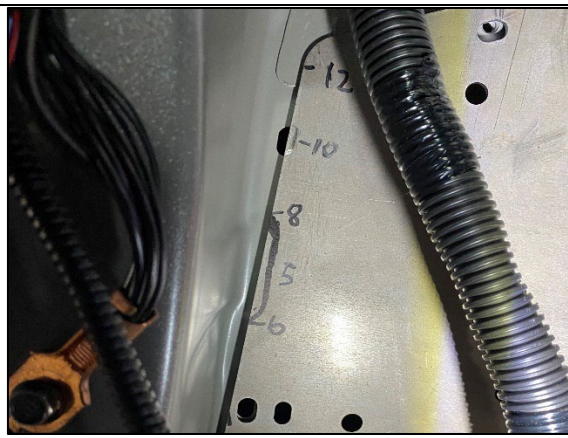
STEP 3.1 TRIM THE SOUND DEADENING ON THE REAR QUARTER PANEL REMOVED IN STEP 1 AS SHOWN.



STEP 3.2. CHECK THE BODY SEAL ON THE WHEEL ARCH AND TRIM BACK FLAT AS SHOWN.



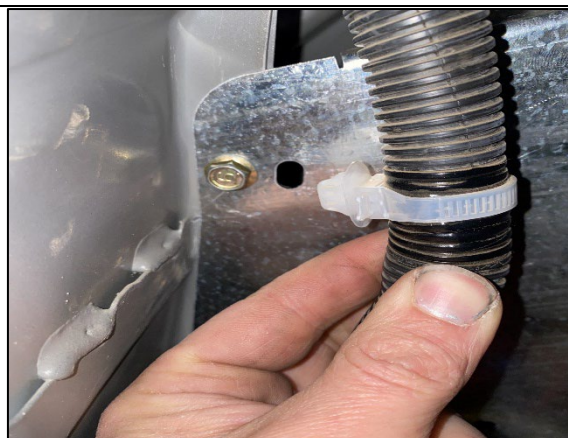
STEP 3.3. LOCATE THE BODY HOLE JUST ABOVE THE BODY SEAL TRIMMED IN STEP 3.2 AND CLEAR OUT TO 7MM. TREAT WITH RUST SEALANT.



STEP 3.4 PULL BACK THE BODY LOOM FROM THE LEFT HAND SIDE TOP AND BOTTOM LOCATIONS AS SHOWN.



STEP 3.5 LIFT THE COMPRESSOR BRACKET INTO PLACE AND FASTEN INTO BODY CAPTIVE NUTS USING M6 X 20 SEMS FASTENERS. USE M6 WHIZZ NUT FROM BEHIND THE 7MM HOLE CLEARED IN STEP 3.3 ABOVE .



STEP 3.6 RECLIP THE MAIN BODY LOOM REMOVED IN STEP 3.4 INTO THE COMPRESSOR BRACKET ON THE LEFT HAND SIDE SLOTS ALLOCATED.

4. OPTIONAL STEPS FOR JBA-CB215 KITS 2 AND 3

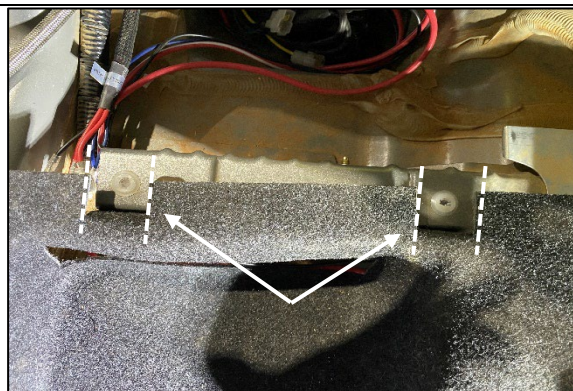
JBA-CB215KIT2 PREPERATION AND INSTALLATION OF OPTIONAL TOOL COMPARTMENT FUSE/AIR/SWITCH PANEL (JBA-CB215TASF)



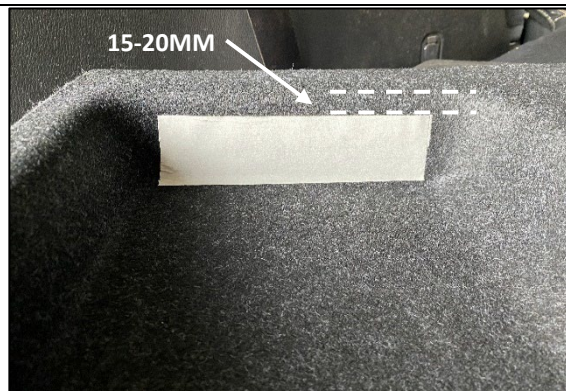
STEP 4.1.1 INSTALL CARLING SWITCH AND ANSH FUSE HOLDERS (SUPPLIED WITH TJM COMPRESSOR) USING M4 X 12 SCREWS. INSTALL JBA-CB103 BULK HEAD AS SHOWN, APPLY THREAD SEALANT TO NUT FROM BEHIND.



STEP 4.1.2 FIT JBA-CB104 0 DEGREE ELBOW USING 567 THREAD SEALANT ON THE REAR OF THE BULKHEAD. INSTALL TJM NITTO FITTING (SUPPLIED IN 013COMPAKN) USING 567 THREAD SEALANT TO FRONT OF BULK HEAD.



STEP 4.1.3 POSITION THE TOOL COMPARTMENT CARPET BACK IN PLACE AND TRIM EITHER SIDE OF BODY PLUGS AS SHOWN AND FOLD CARPET BACK.



STEP 4.1.4 CUT A HOLE OUT OF THE END OF THE CARPET APPROX 15-20MM FROM ALL EDGES AS SHOWN



STEP 4.1.5 FEED THE AIRLINE, SWITCH LOOM AND FUSE WIRES THROUGH THE HOLE JUST CUT IN STEP 4.4.



STEP 4.1.6 CONNECT UP THE AIRLINE AND SWITCH LOOM TO JBA-CB215TASF BRACKET AS SHOWN



STEP 4.1.7 FEED THE POWER WIRE THROUGH EITHER SIDE OF THE FUSE, TERMINATE AND HEAT SHRINK. INSTALL THE BRACKET TO THE BODY PLUGS EXPOSED IN STEP 4.3 USING 14G X 1 CSK PHIL SELF TAPPER.

JBA-CB215KIT3 PREPERATION AND INSTALLATION DRAWER FRONT AIR OUTLET AND SWITCH PLATE



STEP 4.2.1 PREPARE DRAWER FRONT OUTLET FOLLOWING JBA-CB101 INSTRUCTIONS. INSTALL JBA-CB106 90 DEGREE ELBOW TO REAR OF DRAWER FRONT AND TIGHTEN FACING DOWN (BOTTOM OF DRAWER FRONT). CONNECT 400MM HOSE.



STEP 4.2.2 PREPARE SWITCH PANEL AS PER INSTRUCTIONS AND RUN WIRES TO LENGTH.

5. FINAL STEPS



STEP 5.1 NEATLY CABLE TIE AND LOOSE LOOMS AND AIR LINES. TEST ALL AIR CONNECTIONS FOR AIR LEAKS AND CYCLE COMPRESSOR CHECKING ELECTRICAL FUNCTIONALITY.



STEP 5.2 REFIT REAR QUARTER PANEL AND SEATS REFERING TO STEPS 1.1-1.20 ABOVE IF REQUIRED. VACUUM AND WIPE DOWN ALL SURFACES.