

PRODUCT- TJM SINGLE COMPRESSOR ENGINE BAY MOUNTING BRACKET

VEHICLE- FORD PX RANGER 2012-2022 PXI, II, III

PART NUMBER- JBA-CB251SE, JBA-CB251SE-KIT1

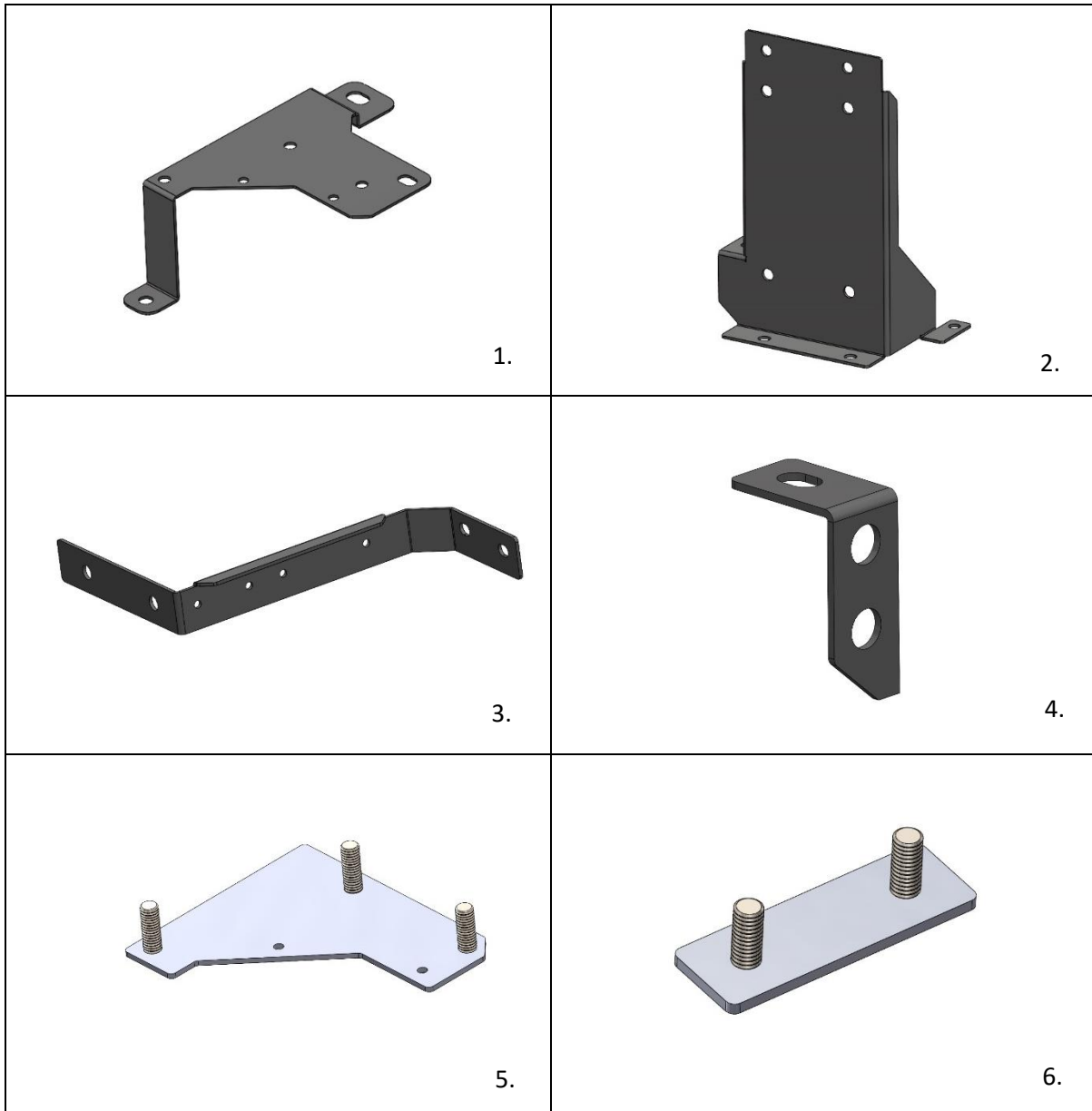
ESTIMATED FIT TIME

- | | |
|--|------------|
| - PREPARATION OF VEHICLE | 30-45 MINS |
| - PREPARATION AND MOUNTING OF COMPRESSOR AND BRACKET | 60-90 MINS |
| - ELECTRICAL WIRING AND PLUMBING OF AIR OUTLETS | 90-120MINS |

IMPORTANT NOTES

- READ INSTRUCTIONS CAREFULLY PRIOR TO FITMENT
- ENSURE 567 THREAD SEALANT IS APPLIED TO ALL AIR THREADS INSTALLED
- REFER TO TJM COMPRESSOR INSTALLATION INSTRUCTIONS FOR WIRING SPECIFICATIONS
- NITTO FITTING USED 013COMPPF01 SUPPLIED SEPARATELY (NOT BY JBA) AVAILABLE THROUGH TJM STORES
- **AFTERMARKET FUEL FILTER/CATCH CANS NOT COMPATIBLE WITH THIS BRACKET AS MOUNTS TO THE SAME LOCATION**

KIT CONTENTS



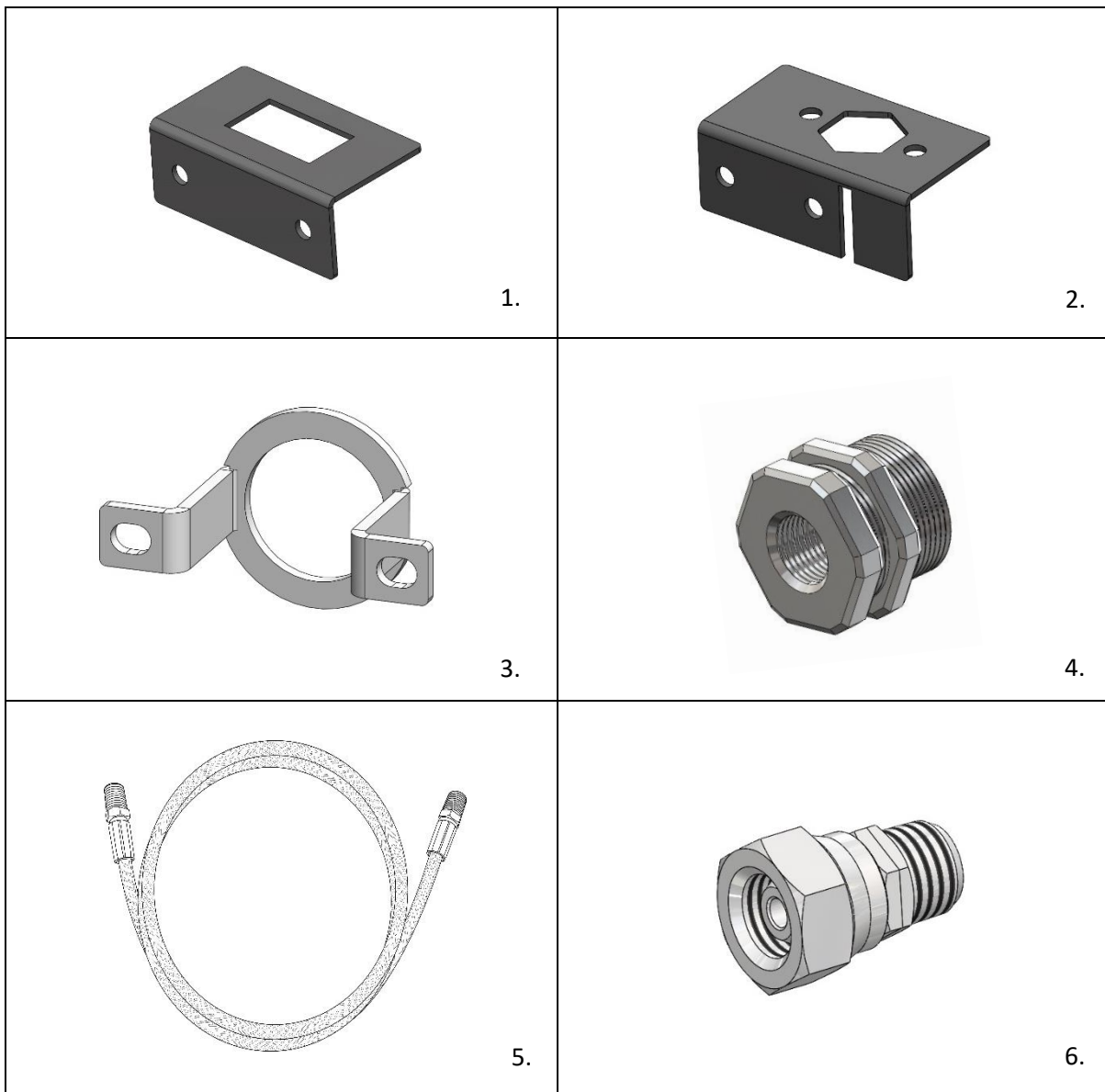
ITEM	DESCRIPTION	PART NO.	QTY
1	JBA PX RANGER BASE BRACKET	10-CB251SE-A	1
2	JBA PX RANGER COMPRESSOR BRACKET	10-CB251SE-B	1
3	JBA PX RANGER MOUNTING BRACE BRACKET	10-CB251SE-C	1
4	JBA PX RANGER COMPRESSOR SUPPORT BRACKET	10-CB251SE-D	1
5	JBA PX RANGER BASE BRACKET STUD PLATE	10-CB251SE-E	1
6	JBA PX RANGER MOUNTING STUD PLATE	10-CB251SE-F	1
7	M4 X 12MM CSK HD PHIL M/T GR 304 S/S	X37 0412CP304	2
8	M4 FLANGED NYLON INSERT LOCK NUT GR 304S/S	X53 04FL304	2
9	M6 X 16MM CSK HD PHIL M/T GR 304 S/S	X37 0616CP304	2
10	M6 NYLON INSERT LOCK NUT GR 304 S/S	X53 06304	5

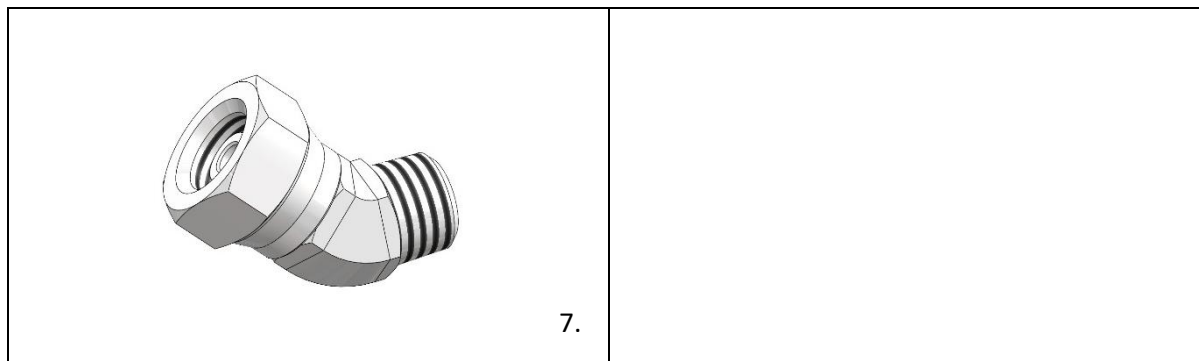
11	1/4 X 5/8 x 18g FLAT WASHER GR 304 S/S	W00 061618304	5
12	M6 x 20MM SEMS ASSEMBLY Z/Y	B48 0620ZY	1
13	M8 HEX SERR FLANGE NYLOC NUT Z/S	N24 FL08ZS	3
14	M8 X 16MM BUTTON HD SOCKET SCR GR 304 S/S	X72 08016304	6
15	5/16 X 3/4 X 18G FLAT WASHER GR 304 S/S	X79 082018G304	12
16	M8 NYLON INSERT LOCK NUT GR 304S/S	X53 8304	6

OPTIONAL KIT PARTS

JBA-CB251SE-KIT1

JBA KIT- PX RANGER COMPRESSOR MOUNT AIR OUTLET AND SWITCH MOUNT





ITEM	DESCRIPTION	PART NO.	QTY
1	JBA PX RANGER SWITCH PLATE BRACKET	10-CB251SE-C-S	1
2	JBA PX RANGER AIR OUTLET BRACKET	10-CB251SE-C-A	1
3	JBA BULK HEAD RECESSED HOUSING BRACKET	10-CB101B	1
4	JBA COMPRESSOR BULK HEAD AND NUT	JBA-CB103	1
5	JBA STAINLESS HOSE 400MM	JBA-CB111	1
6	JBA STAINLESS ELBOW 0 DEGREE	JBA-CB104	1
7	JBA STAINLESS ELBOW 45 DEGREE	JBA-CB105	1
8	M4 X 12MM CSK HD PHIL M/T GR 304 S/S	X37 0412CP304	6
9	M4 FLANGED NYLON INSERT LOCK NUT GR 304S/S	X53 04FL304	6

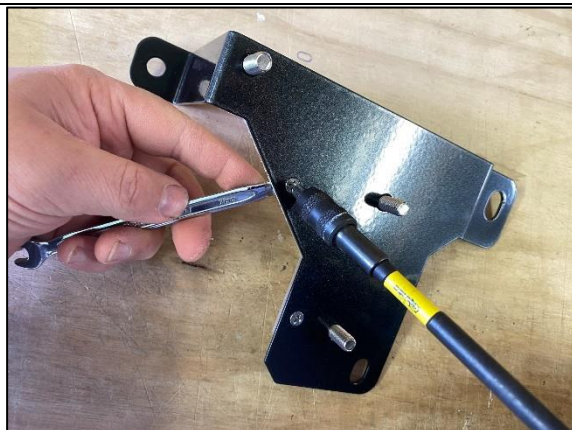
1. PREPARING THE VEHICLE AND COMPRESSOR BRACKET



STEP 1.1 START AT THE REAR PASSENGER SIDE WHEEL ARCH AND REMOVE 7 X BODY CLIPS AND TAKE OFF MUD FLAP.



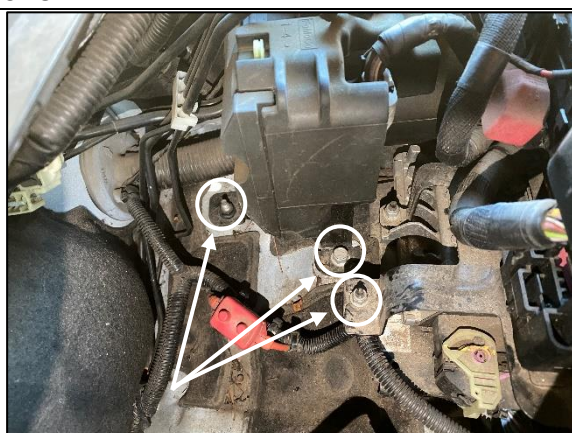
STEP 1.2 REMOVE REMAINING BODY CLIPS IN PLASTIC WHEEL ARCH AND PULL OUT.



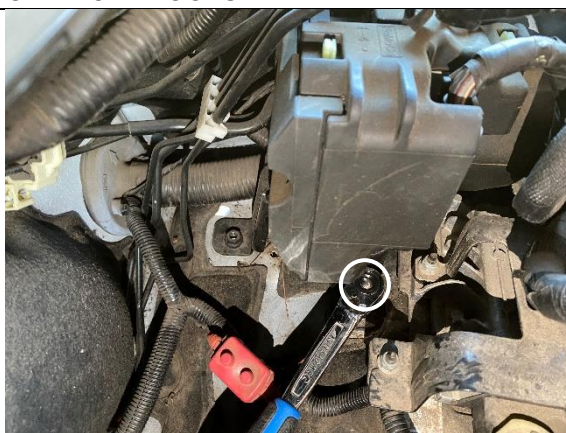
STEP 1.3 ATTACH THE BASE BRACKET STUD PLATE TO THE BASE BRACKET USING M4 X 12 CSK SCREWS AND M4 FLANGED NYLOC AS SHOWN



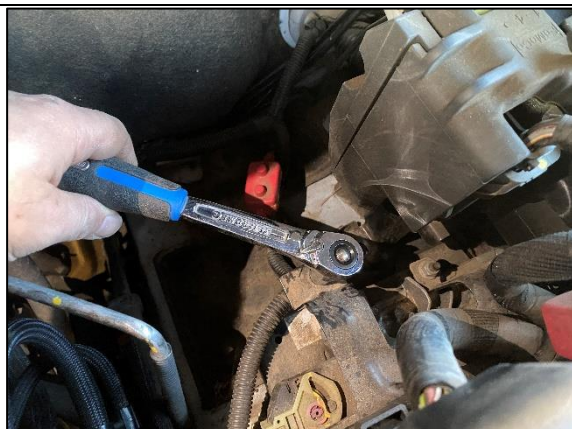
STEP 1.4 ATTACH THE COMPRESSOR BRACKET SUPPORT BRACKET USING M6 X 16 CSK HEAD SCREWS WITH WASHER AND NYLOC NUT ON UNDERSIDE AS SHOWN



STEP 1.5 MOVE TO THE ENGINE BAY. THE FOLLOWING 3 BOLT LOCATIONS NEED TO BE REMOVED AS SHOWN IN THE FOLLOWING STEPS.



STEP 1.6 REMOVE THE CENTRE M8 BOLT FROM THE ENGINE BAY USING 13MM SOCKET.



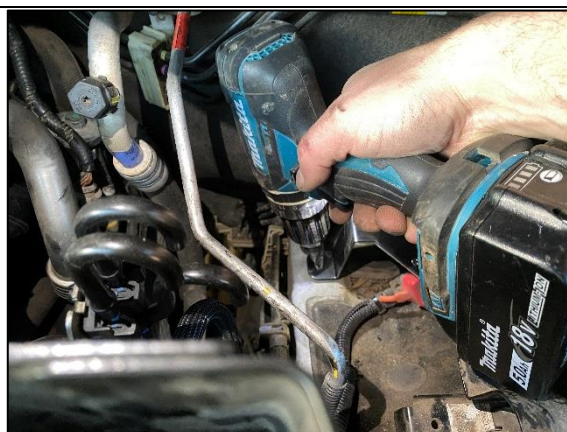
STEP 1.7 REMOVE THE FRONT 6MM NUT USING 10MM SOCKET.



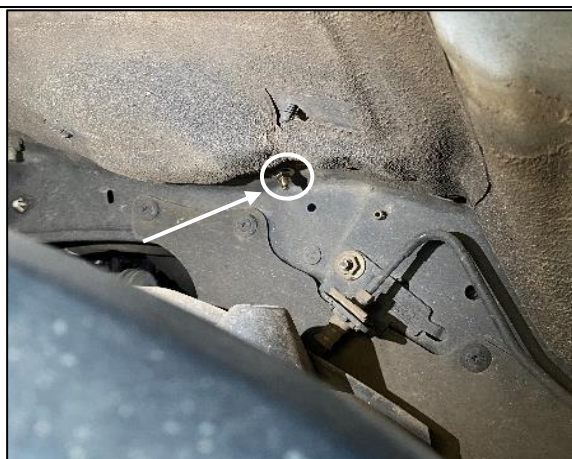
STEP 1.8 REMOVE REAR M8 BOLT FROM UNDERSIDE IN WHEEL ARCH USING 13MM SOCKET AS SHOWN.



STEP 1.9 SLIDE JBA-CB251SE-A BASE BRACKET INTO THE ENGINE BAY AS SHOWN AND RE-INSTALL 2 X M8 SCREWS REMOVED PREVIOUSLY.



STEP 1.10 DRILL OUT THE BOTTOM FOOT LOCATION TO 6MM. DE-BUR AND TREAT WITH RUST PREVENTATIVE.



STEP 1.11 FIX BOTTOM LEG DOWN USING M6 X 20 SEMS ASSEMBLY FROM INSIDE ENGINE BAY AND FASTEN FROM UNDERNEATH IN WHEEL ARCH USING WASHER AND NYLOC NUT.



STEP 1.12 IF FITTED, REMOVE THE TOP COVER AS SHOWN PUSHING IN EITHER SIDE OF THE 2 TABS.

2. PREPARING THE COMPRESSOR



STEP 2.1 SEPARATE THE TJM COMPRESSOR FROM THE TJM BASE BRACKET AS SHOWN.

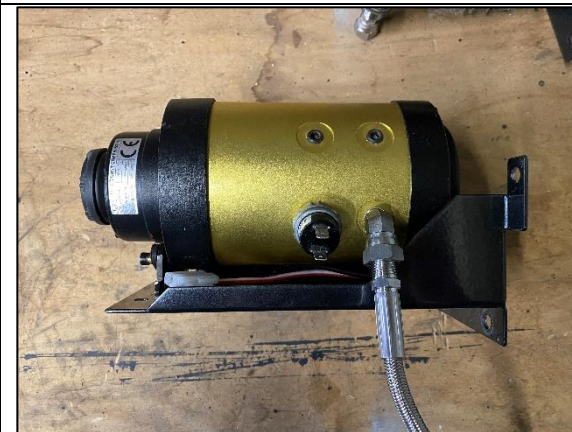


STEP 2.2 IF FITTING JBA KIT1, FIT JBA-CB105 45 DEGREE ELBOW AND JBA-CB111 400MM HOSE TO THE BOTTOM OF THE COMPRESSOR IN THE ORIENTATION SHOWN.

NOTE ON THE BELOW STEPS. AS THE BOTTOM COMPRESSOR SCREWS ARE A BIT FIDDELY TO LINE UP IN STEP 2.4, YOU CAN REVERSE THE STEPS AND ATTACH THE COMPRESSOR BACK TO THE BASE THEN BOLT IT ALL BACK TO THE JBA BRACKET BUT SCREWING ON AND TIGHTENING THE M8 NUTS ON WILL ALSO BE TRICKY TO ACCESS.

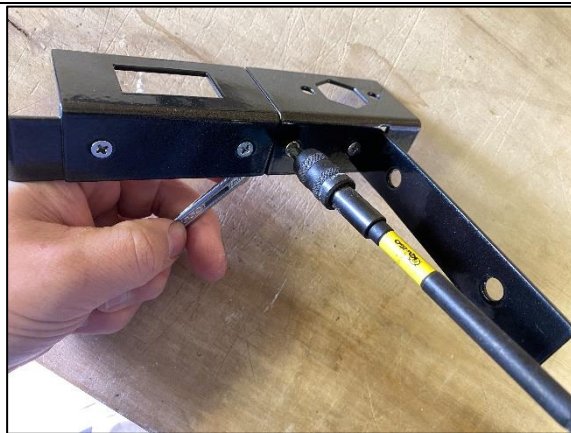


STEP 2.3 RE-INSTALL THE TJM COMPRESSOR THE BASE BRACKET USING M8 X 16 SCREWS WITH WASHER UNDER THE HEAD AND M8 NYLOC WITH WASHER UNDERSIDE AS SHOWN.

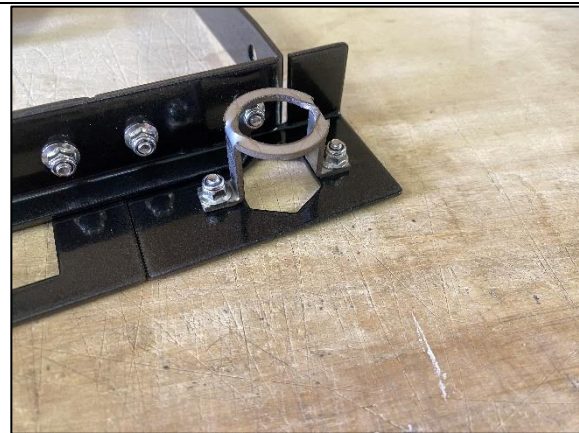


STEP 2.4 RE-FIT THE COMPRESSOR TO THE BRACKET AS SHOWN AND COMPLETE ELECTRICAL WIRING AS PER TJM INSTRUCTIONS.

2A. OPTIONAL STEPS IF FITTING JBA KIT1 (ENSURE 567 THREAD SEALANT USED ON ALL JOINS)



STEP 2A.1 ATTACH THE AIR OUTLET AND SWITCH PLATES TO THE JBA-CB251SE-C SUPPORT BRACKET USING M4 X 12 CSK SCREWS AND M4 FLANGE NYLOC.



STEP 2A.2 FIT THE JBA-CB101B BULKHEAD BRACKET USING M4 X 12 CSK SCREWS AND FLANGE NYLOC.



STEP 2A.3 FIT THE TJM NITTO FITTING (NOT SUPPLIED BY JBA) TO JBA-CB103 BULKHEAD. ENSURE FLAT FACES ALIGN AS SHOWN.



STEP 2A.4 FIT THE ASSEMBLY AS SHOWN AND TIGHTEN BULKHEAD NUT ENSURING LOCTITE IS APPLIED TO THE NUT.

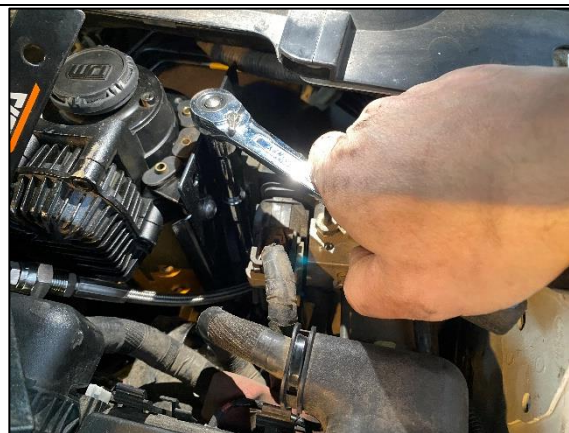


STEP 2A.5 ATTACH JBA-CB104 0 DEGREE ELBOW AS SHOWN.

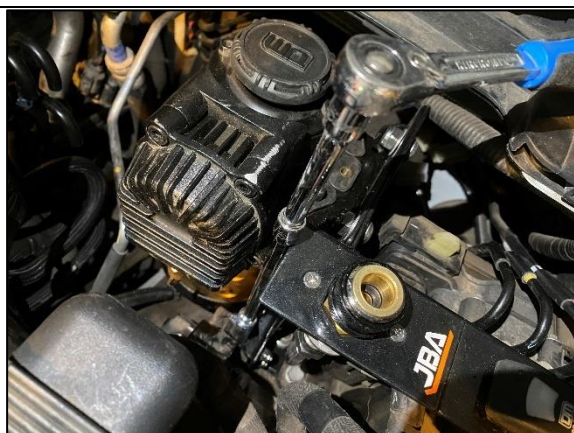
3. INSTALLING THE BRACKET AND COMPRESSOR INTO THE VEHICLE



STEP 3.1 LIFT THE COMPRESSOR INTO PLACE ONTO THE 3 STUDS OF THE BASE BRACKET.



STEP 3.2 FASTEN THE 3 X M8 FLANGE NYLOC NUTS TO THE STUDS ON THE BASE. IT IS SUGGESTED TO START THE NUTS USING AN EXTENDABLE MAGNET.



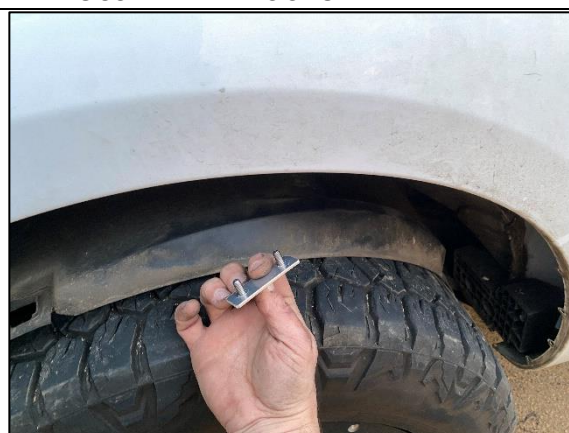
STEP 3.3 RE FIT THE M6 NUT TO THE FORD BODY STUD REMOVED IN STEP 1.7 USING 10MM SOCKET.



STEP 3.4 IF FITTING OPTIONAL KIT1, ATTACH JBA-CB111 400MM HOSE TO THE ELBOW PREVIOUSLY FITTED AS SHOWN



STEP 3.5 FIT THE SUPPORT BRACKET TO THE COMPRESSOR BRACKET USING M8 X 16 WITH WASHER UNDER THE HEAD AND M8 NYLOC WITH WASHER ON OTHER SIDE.



STEP 3.6 FROM UNDER THE WHEEL ARCH, FEED IN THE STUD PLATE INTO THE ENGINE BAY



STEP 3.7 STUD PLATE INTO ENGINE BAY. NOTE IN EARLIER MODELS THESE MOUNTING POSITIONS MAY NEED TO BE MARKED AND DRILLED OUT.



STEP 3.8 FASTEN MOUNTING BRACE BRACKET TO STUD PLATE USING M6 WASHER AND NYLOC NUT.



STEP 3.9 FINAL STEPS

- CHECK ELECTRICAL FUNCTIONALITY
- CHECK FOR AIR LEAKS
- RE-FIT WHEEL ARCH AND CLIPS'
- WIPE DOWN AND CABLE TIE ANY WIRIING NEATLY.